

# Linking work research to development horizons in the European Social Fund, Lund

Lars Wärngård, Forte  
Dolores Kandelin Mogard  
Project manager UUA

## Platform for Sustainable Working Life

The Swedish ESF Council and Forte have initiated cooperation to create good conditions for a sustainable working life that will last until mid-2020.

The aim is to offer employers, practitioners and experts the opportunity to innovate / use existing knowledge and research, but also help to create a sustainable working life



## Platform for Sustainable Working Life

International surveillance, knowledge dissemination, analysis of results in ongoing projects and research dissemination and dialogue with regional and national actors.



# Platform for Sustainable Working Life

- Broadened recruitment
- Social innovation, KS
- Vocational training&education, KS
- Museum of work
- Social Innovation
- Dissemination



## Platform for Sustainable Working Life

The European Social Fund in Sweden (Swedish ESF Council) manages the national program of the European Social Fund in Sweden.

Efforts include, among other things, transition to jobs for those far from the labor market and skills development for employed persons and overall support the development of a sustainable working life.

They are carried out in broad collaboration between different actors



UUA

Universellt Utformade Arbetsplatser  
Universal Designed Workplaces

Dolores Kandelin Mogard, Project manager UUA

# The partners



Akademikerförbundet SSR



Swedavia  
Airports

sveriges  
företags  
hälsor

VASAKRONAN



EUROPEISKA UNIONEN  
Europeiska socialfonden



UUA  
Universellt Utformade Arbetsplatser

## **The overall objective of the project**

To achieve a shift in the perspective of the view of our working life. To create a workplace designed after the differences represented in our society.



EUROPEISKA UNIONEN  
Europeiska socialfonden



UUA  
Universellt Utformade Arbetsplatser



# What is universal design?



## Convention on the Rights of Persons with Disabilities

Design of products, environments, programmes and services so that they can be used by everyone as far as possible without the need for adaptation or special design.



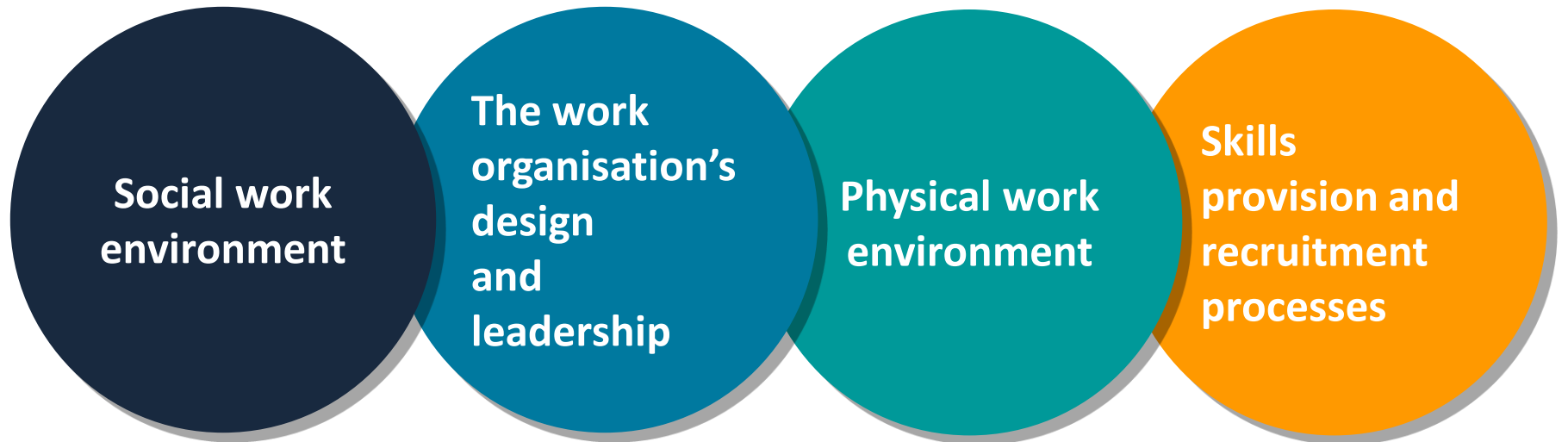
## A universally designed workplace

is from the start inclusive for everyone. Differences are incorporated and made use of.

An holistic view that includes more than a traditional disability adjustment or individual integration measures.

Doing right from the start, taking account of and design the workplace in line with the differences within society.

# Four different perspectives that together constitute the idea of universally designed workplaces



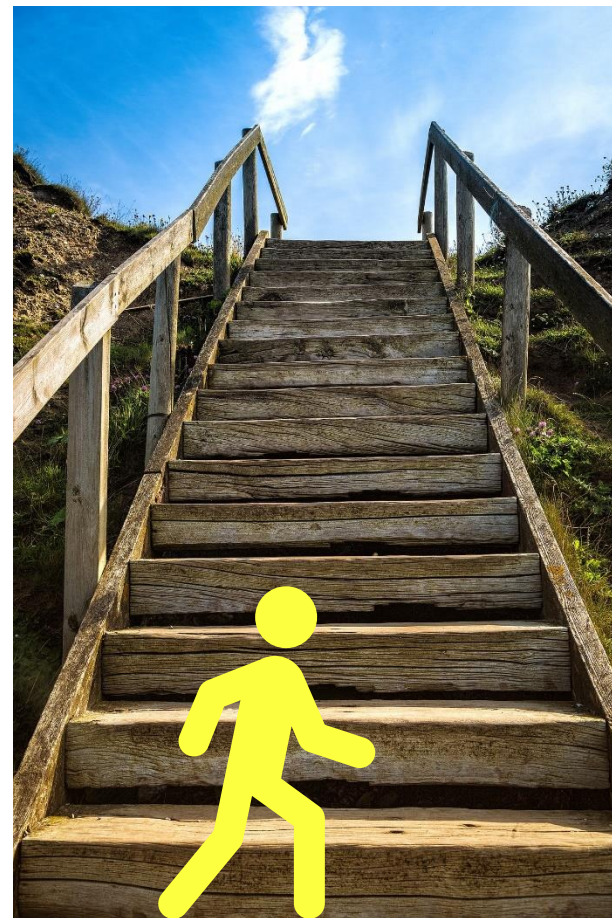
# How do we get there?

## Step 1)

Develop models, methods and tools for creating workplaces that are universally designed.

## Step 2)

Training of people with the mandate to bring about change in workplaces; managers, human resources directors, union officials, procurement officers, facility managers, safety officers.



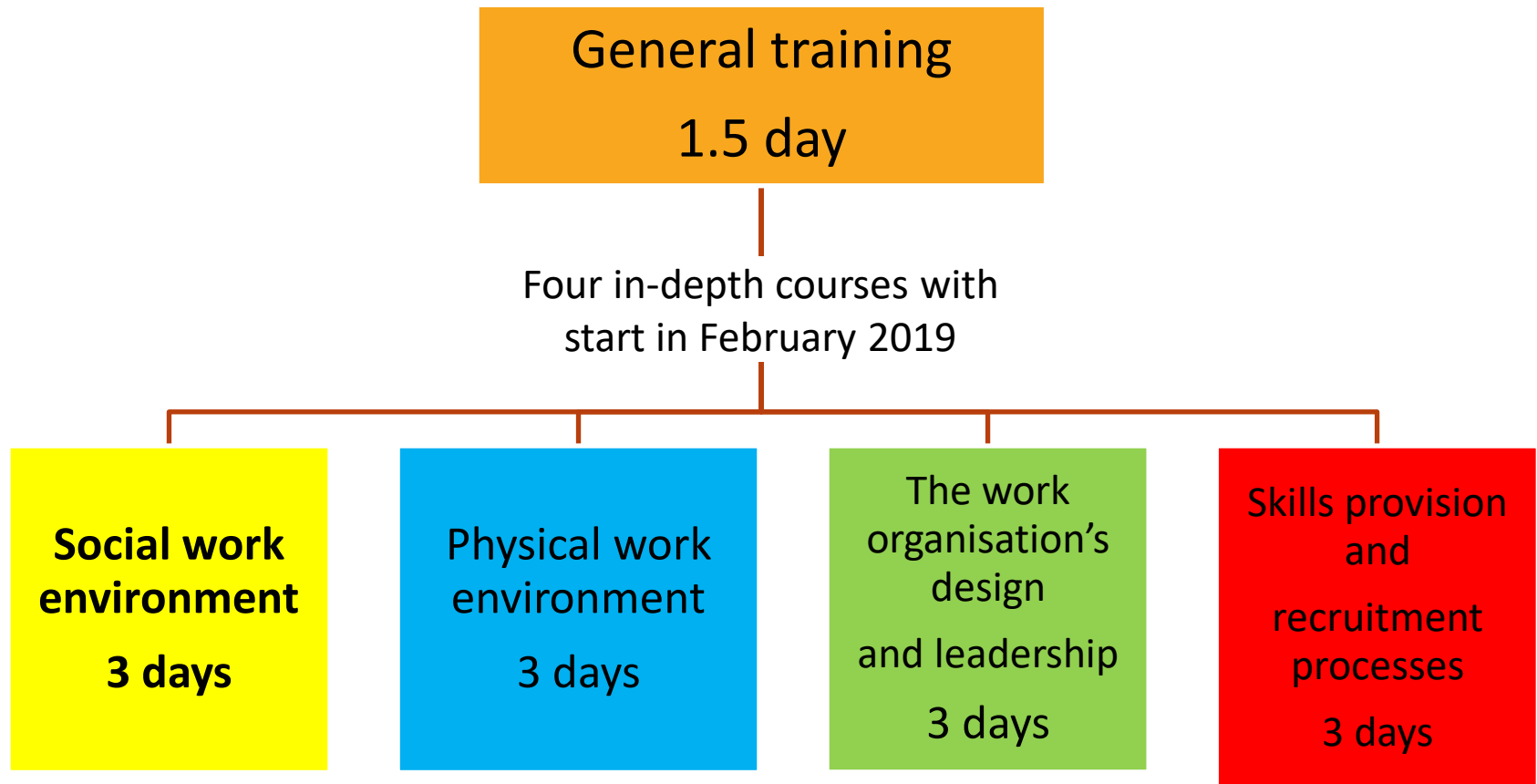
EUROPEISKA UNIONEN  
Europeiska socialfonden



UUA

Universellt Utformade Arbetsplatser

# Training sessions





## Our vision

A sustainable work life  
with universally designed  
workplaces where  
people's differences are  
valued and seen as an asset.



EUROPEISKA UNIONEN  
Europeiska socialfonden



UUA  
Universellt Utformade Arbetsplatser